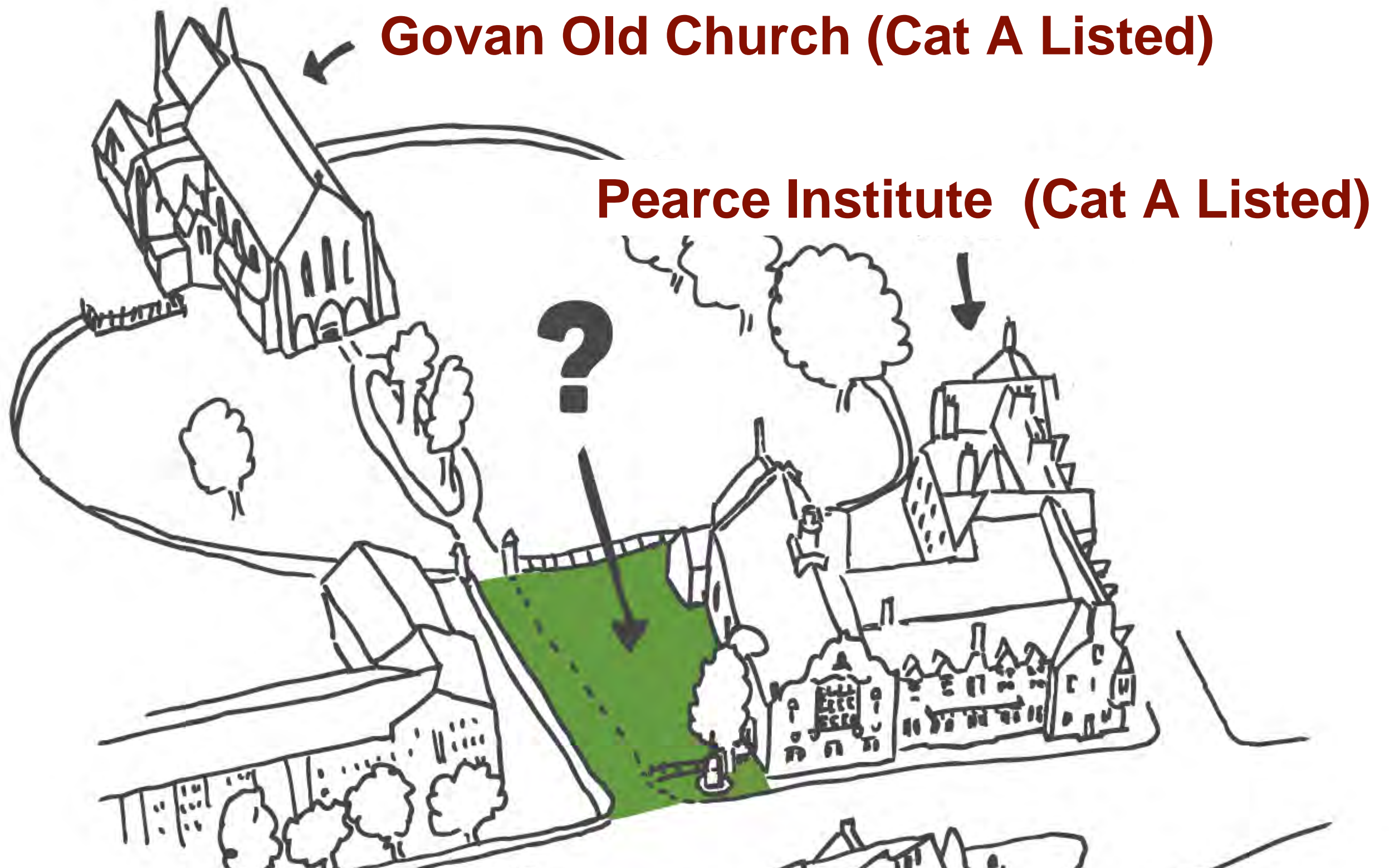


DISCOVERING DINNAKEN SQUARE

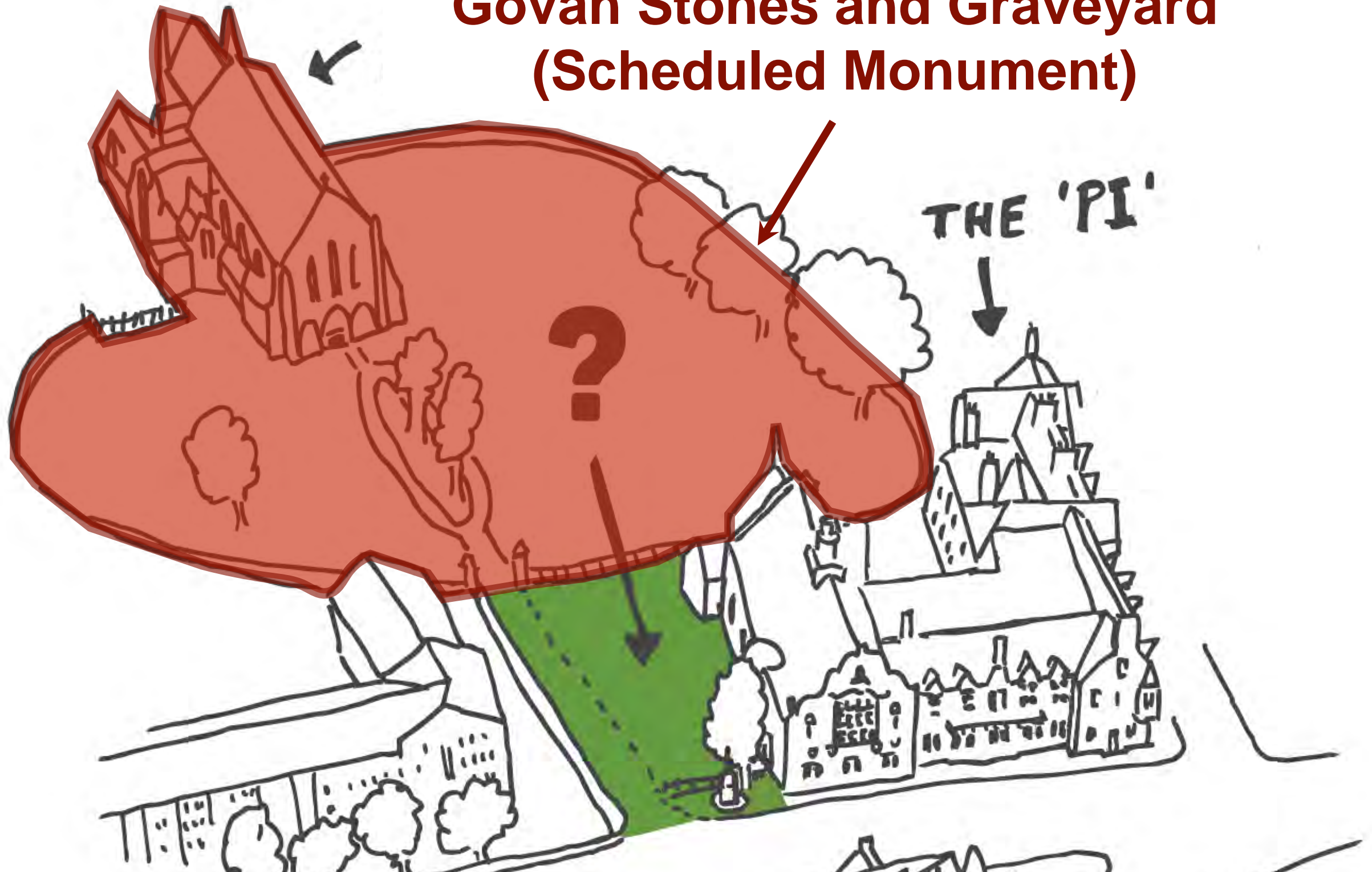


**WHY IS THIS PLACE
IMPORTANT?**



Govan Old Church and The Pearce Institute are both designated as Category 'A' Listed Buildings. These are buildings of national or international importance, and are protected by law and covered by Listed Building Consent.

Govan Stones and Graveyard (Scheduled Monument)



The graveyard and the collection of medieval carved stones are protected by law as a 'Scheduled Monument' - a nationally important archaeological site or historic building.

**THE SITE ALSO FALLS WITHIN
GOVAN CONSERVATION AREA**



Green boundary shows the extent of Govan Conservation Area, designated in 2008

WHAT DO WE KNOW?

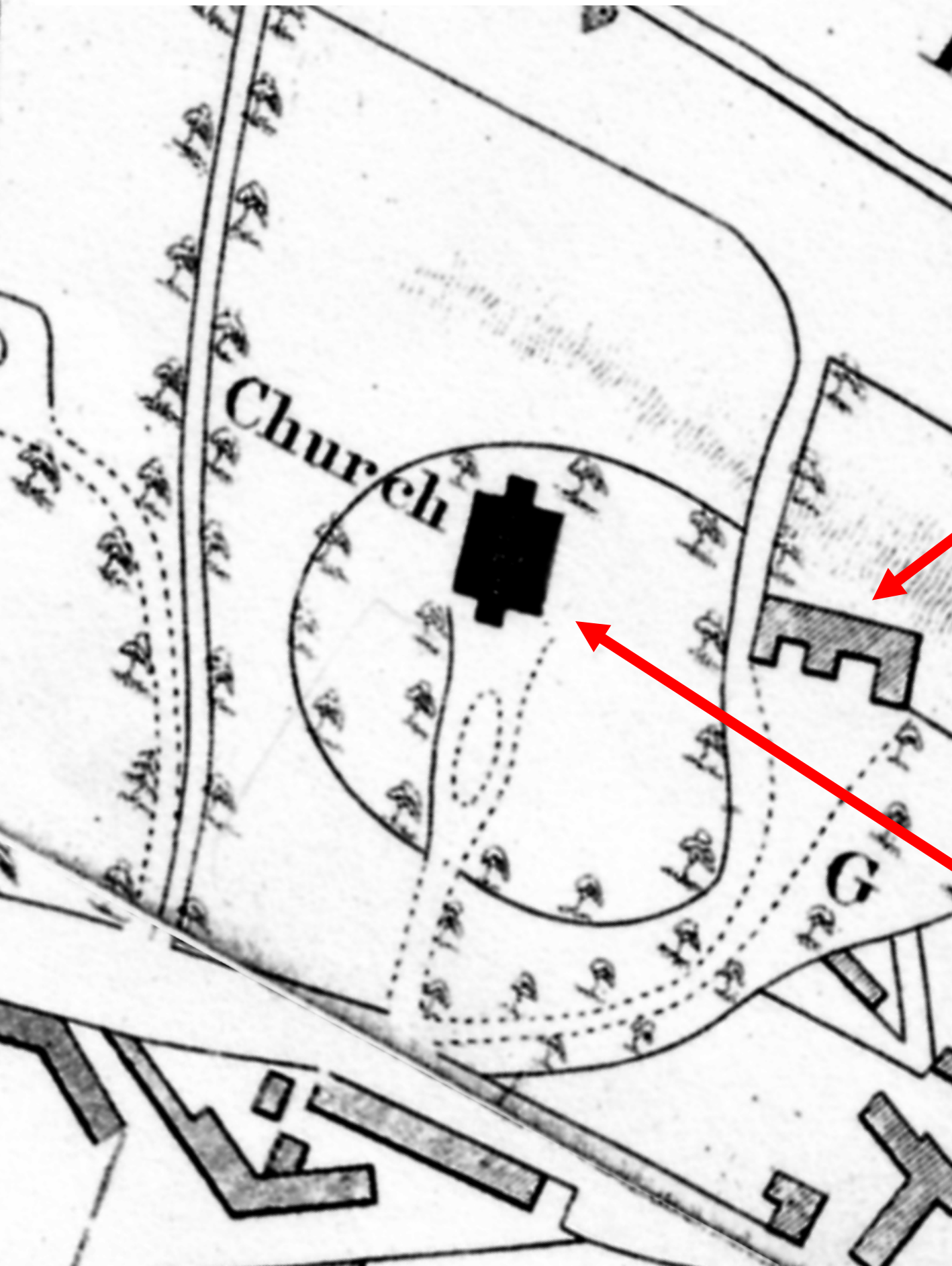
THERE'S A 1000+ YEAR OLD DITCH!



At the north end of the site, buried c. 1m below the current ground level, lies the remains of an ancient ditch that once defined the boundary of the churchyard. This ditch has been dated to the period when the Kings of Strathclyde were using the church as their burial ground.

The ditch being excavated in 1994 by Glasgow University

George Martin's map of 1842

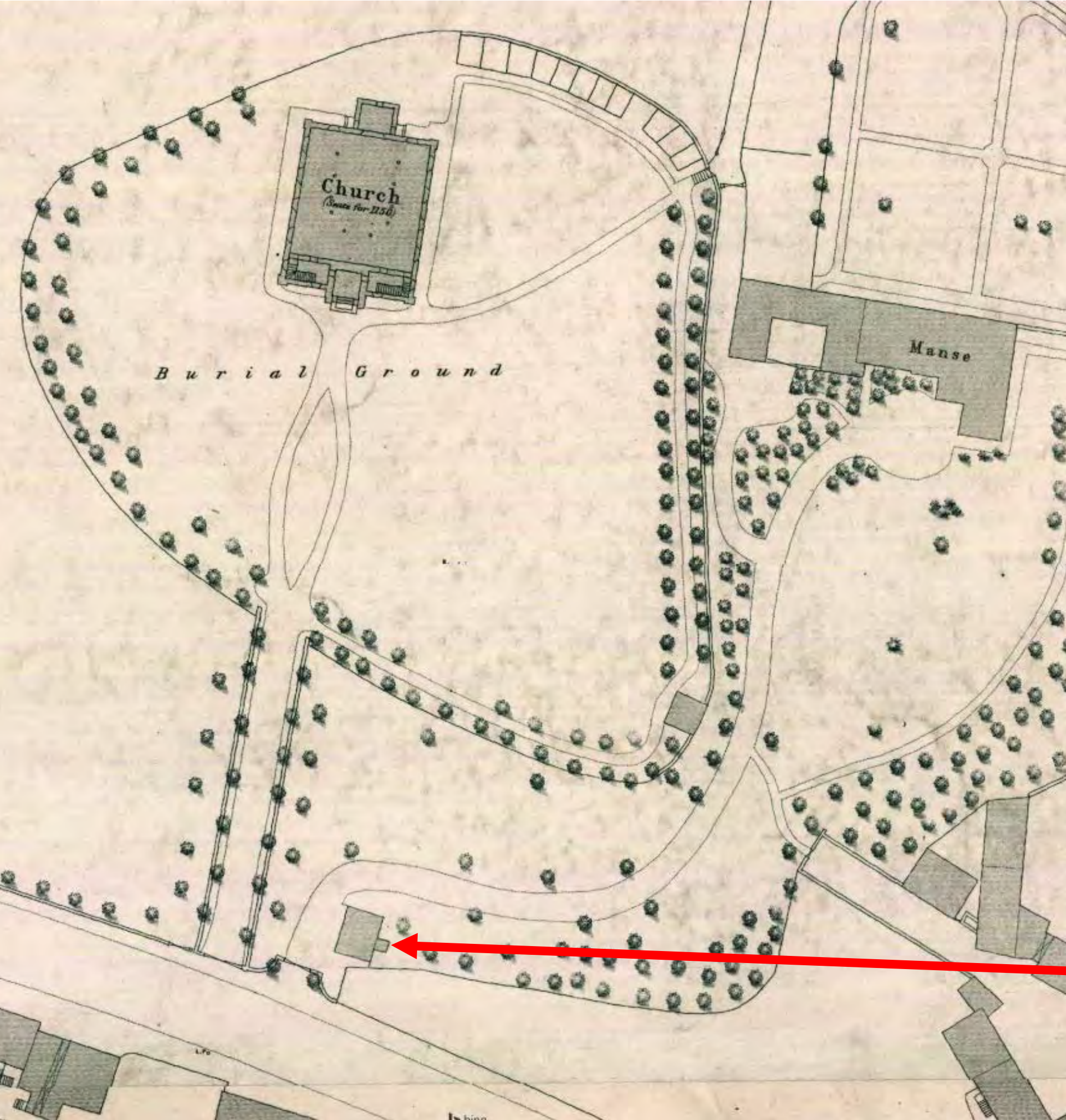


Govan Old manse



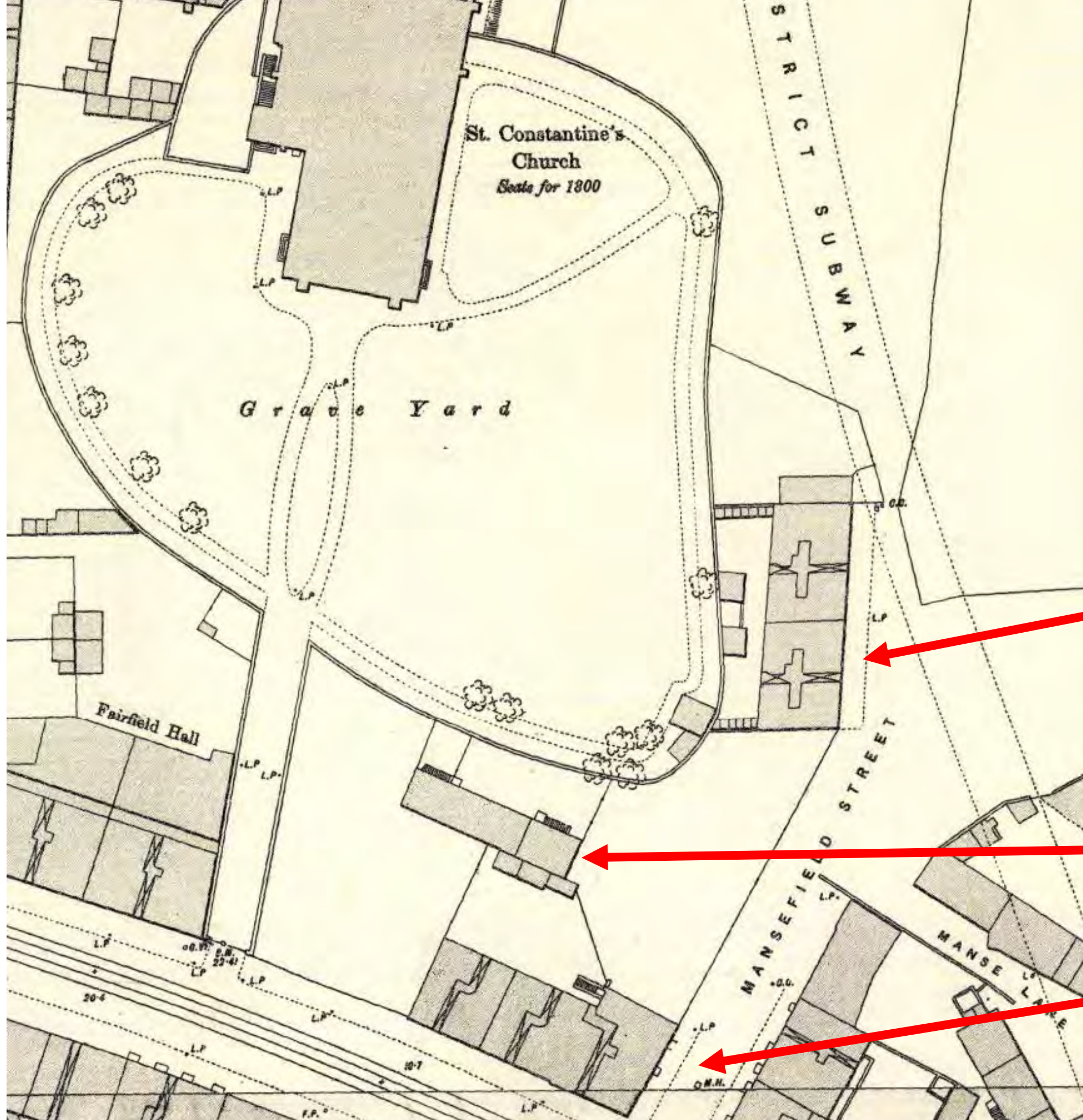
The church in 1857

Ordnance
Survey 1st
Edition Town
Plan (1857).



Govan Manse
gate lodge

Ordnance Survey 2nd Edition Town Plan (1892).



Tenements

Workshops?

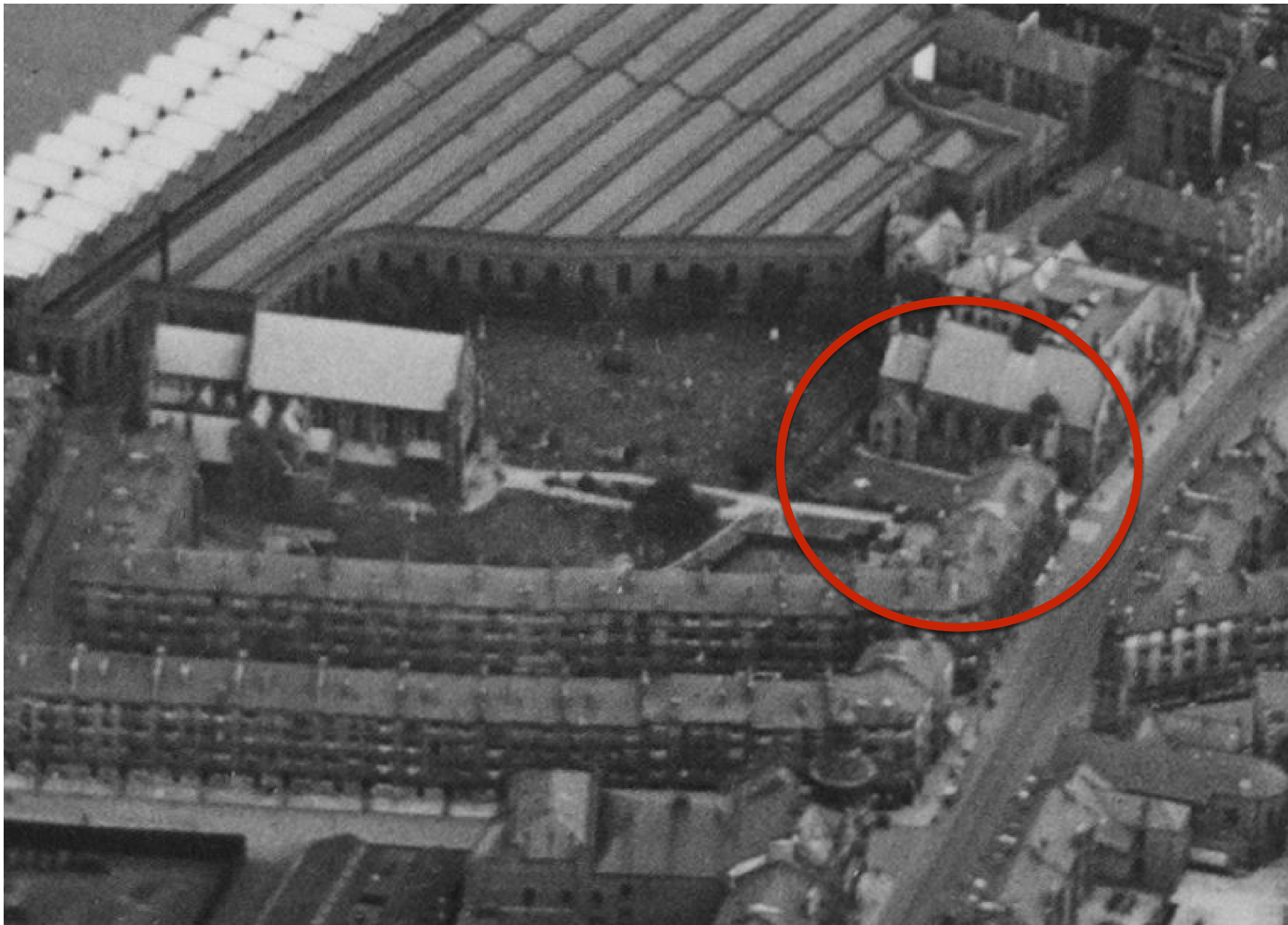
Tenements

GOVAN WAR MEMORIAL

At the south end of the site is the Govan War Memorial. The granite memorial takes the form of a market cross and was funded by the former Burgh Council. In 1922 they engaged Robert Gray memorial sculptors to undertake the work. The firm were members of the National Scheme for Disabled Men, providing work for the war wounded in some of their workshops after the First World War.



Remembrance service (date unknown)



Aerial photo: November, 1929. NCAP-000-000-086-465

GEORGE'S MARVELLOUS GARDEN

Perhaps the most famous Govan minister in modern times was George MacLeod (1930-1938). He used his ministry to launch the Iona Community, a body which still flourishes.

During the Great Depression he engaged unemployed shipyard workers to create the Church Gardens between the Govan War Memorial and the main entrance to the Churchyard.





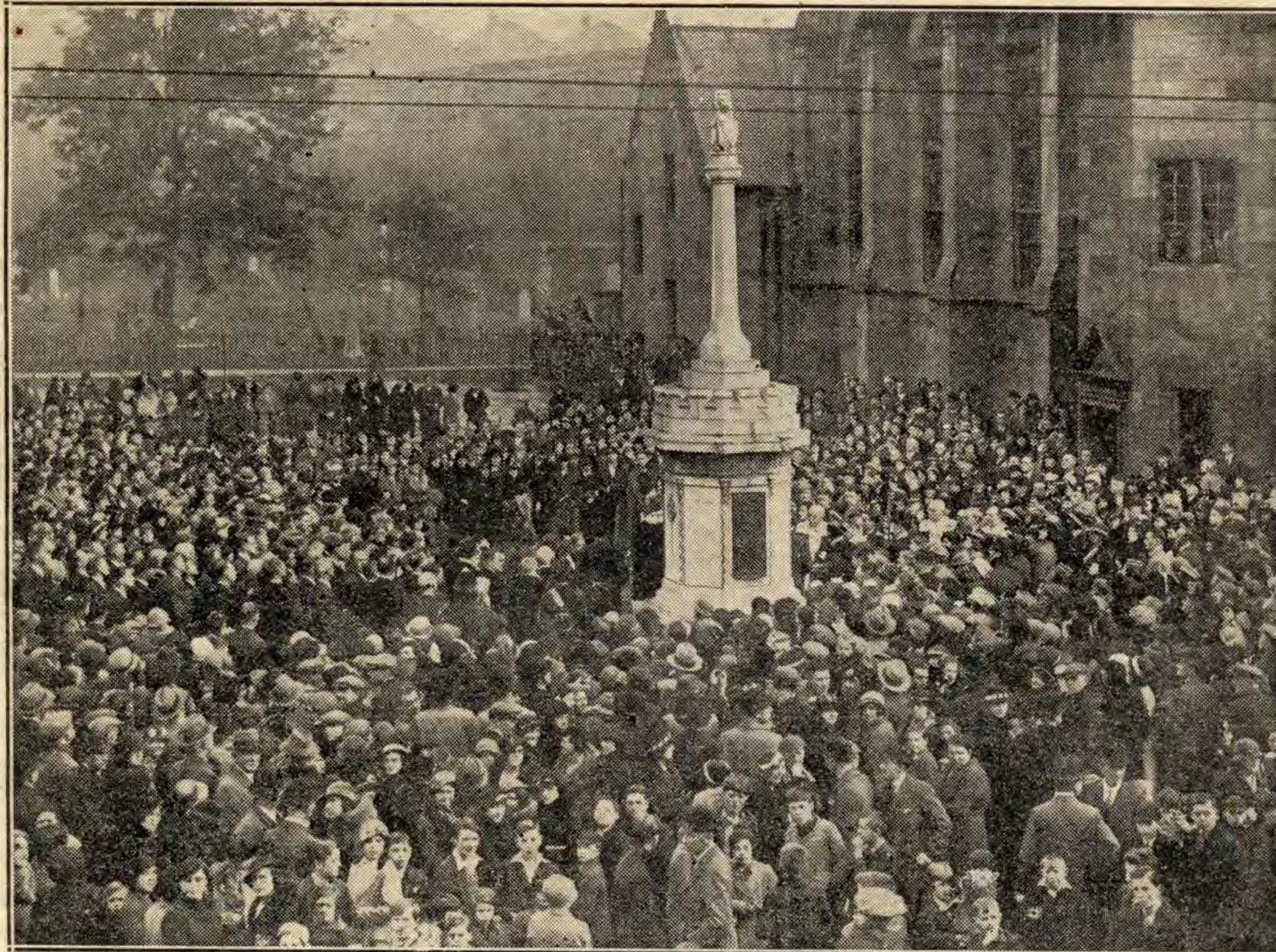
BEAUTY FOR ASHES

Unemployed Reclaiming Waste Ground to make a Paved Garden



Volunteers tree planting in 1934.

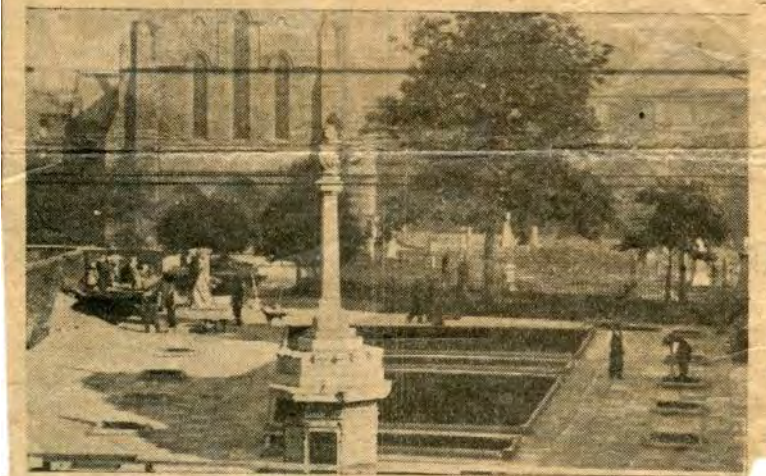
GOVAN WAR MEMORIAL GARDENS OPENED



The scene at Govan War Memorial, Glasgow, yesterday when Sir Iain Colquhoun, Bt. of Luss, formally opened the new garden surround which has been carried out by voluntary labour. The work was done by employed and unemployed men of Govan Old Parish Church.

SPECIAL TO "THE EVENING TIMES"

ALL DONE BY VOLUNTARY LABOUR



New Garden at Govan War Memorial

WILL BE OPENED SUNDAY WEEK

SIR IAIN COLQUHOUN, Bt. of Luss, will open the new garden surrounding Govan War Memorial on Sunday, October 14, on the invitation of the Rev. George F. Macleod, M.C., B.A., minister of Govan Old Parish Church.

The Lord Provost has been invited to the ceremony. Others present will be Mr R. Meryn Noad, A.R.I.B.A., the designer of the garden, and Mr Thomas S. Macintyre, the supervisor of the operations.

This beautiful improvement has taken five months of almost continuous labour to complete, and all the work has been carried out by voluntary labour, both unemployed and employed men of the congregation, to the number of about 100 taking their part.

No Material Recompense

The unemployed men received no material recompense other than their midday meal, which was provided at the expense of the church.

This great venture was the subject of a wireless appeal by Mr Macleod on September 16. Since then the scheme has aroused wide interest, people coming from as far away as Edinburgh to see it, and letters reaching Mr Macleod from all parts of the country.

It is a fitting and happy climax to Mr Macleod's ambitious plan that Sir Iain Colquhoun should be the man to perform

the opening ceremony, for Sir Iain has been actively interested in the work in the Pearce Institute and of the Parish Church for many years, and he is a very popular figure in Govan.

Will Assemble in Govan Road

On October 14, Sir Iain will attend the morning service in the church. The congregation will then assemble in Govan Road and the opening ceremony will be performed.

For that day the garden square will be laid out with trees and flowers by Messrs Austin, Maclean and Co. Ltd., the Glasgow florists.

It is worthy of note that this is one of the largest voluntary labour schemes ever attempted, and is one of the few to reach such a successful completion.

On May 21 Mr Macintyre and the men of the congregation set to the digging and levelling of an ugly sunken court. To-day that area is a paved garden square, where, in the near future, flower beds and trees will flourish.

2500 Paving Slabs

Over 2500 paving slabs have been used, 600 tons of slag and earth man-handled, and railings removed and gates set back to the entrance to the churchyard. The garden is not reached off from Govan Road in any way.

The garden was officially opened on Sunday October 14th 1934.



Detail of a plan of Govan Old Churchyard, 1936, showing Macleod's scheme for the new gardens.

AIR RAID SHELTERS



Archives held in Govan Old Church contain correspondence relating to the reinstatement of the garden in the 1950s, following the construction of air raid shelters in the space during World War 2. Shelters were built across the city but their locations were rarely documented, and have been forgotten over time.

Do you remember the air raid shelters in the garden? We'd love to hear from you....

GB 8325 b c

Nur für den Dienstgebrauch

Bild Nr. 596 L 101

Aufnahme vom 2. 10. 39

Glasgow-Govan

Schiffsmaschinengießerei „Harland & Wolff Ltd.“

Länge (westl. Greenw.): 4° 19' 00" Breite: 55° 51' 25"
Mißweisung: - 13° 27' (Mitte 1941) Zielhöhe über NN 10 m

Maßstab etwa 1 : 16 500

Genst. 5. Abt. September 1941

Karte 1 : 100 000
GB/S 26



1. Werkstatt- und Fabrikationshalle, massiv, mehrstöckig
Satteldach mit aufgesetzten Reitern, kleine Schorn-
steine etwa 36 300 qm
2. Betriebs- und Nebengebäude, massiv, Satteldächer etwa 2 400 qm
3. Materiallagerplätze

Bebaute Fläche etwa 38 700 qm
Gesamtausdehnung etwa 93 600 qm

Gleisanschluß vorhanden
GB 45 42 Princess Dock
GB 45 43 Queens Dock

GB 50 11 Kraftwerk
GB 56 76 Getreidespeicher
GB 82 77 Lüftungsanlagen auf Kriegsschiffen
GB 83 19 Harland & Wolff, Schiffsmotorenbau
GB 83 20 Schiffswerft Henderson
GB 83 44 Werft von Curle, Barclay & Co.
GB 83 47 Werft von Stephens & Sons.
GB 83 48 Werft von Fairfield
GB 83 49 Werft von Harland & Wolff
GB 83 50 3 Trockendocks und Werkstätten

An aerial view of Clyde, taken by a Luftwaffe reconnaissance aircraft in October 1939. Red lines indicate shipyards and docks identified as potential targets.

THE SPACE TODAY....



WHAT NEXT FOR DINNAKEN SQUARE?

- How has the space evolved over time?
- Can we build on, or challenge, current research?
- How can we integrate the heritage assets of the space within a new design?